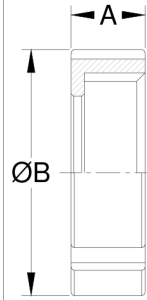


## Porca Circular

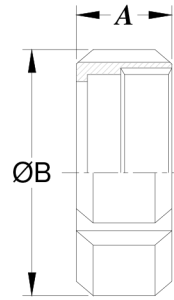
Ø	RJT		SMS		IDF		DIN	
	A	ØB	A	ØB	A	ØB	A	ØB
1/2"	-	-	-	-	-	-	18	38
3/4"	-	-	-	-	-	-	18	44
1"	22,2	58,5	20	50	30	48	21	63
1½"	22,2	74	25	73	21,5	64	22	78
2"	22,2	85,5	26	83	21,5	77	22	92
2½"	22,2	98,5	30	99	21,5	91	25	112
3"	22,2	111,6	32	113	21,5	106	29	127
4"	22,2	139	30	153	21,5	135	31	148
5"	-	-	35	179	-	-	35	178
6"	-	-	40	209	-	-	40	210

norma	nº de ranhuras das porcas
RJT	4 - todas as bitolas
SMS	6 - todas as bitolas
IDF	6 - todas as bitolas
DIN	4 - 1/2" à 2" \ 6 - 2½" à 6"

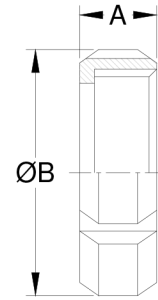
Nota: Todas as porcas são confeccionadas em Inox 304, para Inox 316 consultar a "INOXFLUID"



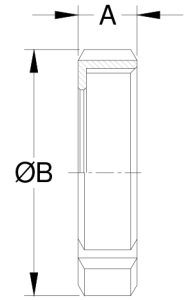
RJT



SMS



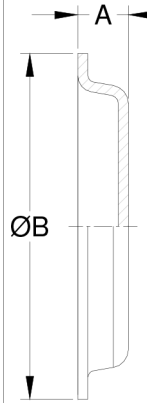
IDF



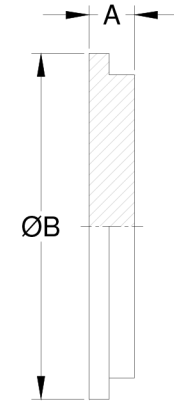
DIN

## Tampão

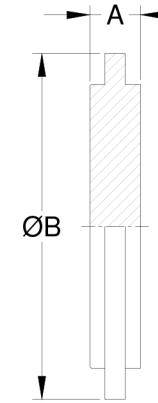
Ø	RJT		SMS		IDF		DIN	
	A	ØB	A	ØB	A	ØB	A	ØB
1/2"	-	-	-	-	-	-	9	22,2
3/4"	-	-	-	-	-	-	11	28,2
1"	10	41,3	7	35,5	10	33,8	13	44
1½"	10	54	8	55	10	47	13	56
2"	10	66,7	9	65	10	60,5	14	68,5
2½"	10	79,4	9	80	10	74	16	86
3"	10	92,1	11	93	10	87,5	16	100
4"	10	117,8	13	128	10	114,1	20	121
5"	-	-	22	153	-	-	22	149,8
6"	-	-	22	179	-	-	24	175,2



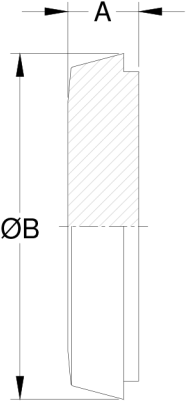
RJT



SMS



IDF



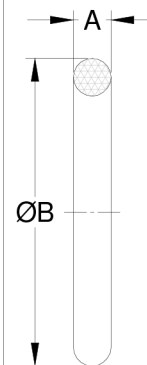
DIN

## Anel de Vedação

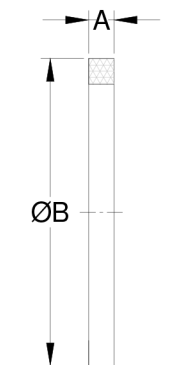
Ø	RJT		SMS		IDF		DIN	
	A	ØB	A	ØB	A	ØB	A	ØB
1/2"	-	-	-	-	-	-	5	20
3/4"	-	-	-	-	-	-	5	26
1"	6,35	39,7	5,5	32	6,5	31,5	5	40
1½"	6,35	52,4	5,5	48	6,5	46	5	52
2"	6,35	65,1	5,5	61	6,5	59,5	5	64
2½"	6,35	77,8	5,5	73,5	6,5	73,2	5	81
3"	6,35	90,5	5,5	86	6,5	86	5	95
4"	6,35	115,7	5,5	114	6,5	112,5	5	114
5"	-	-	5,5	137	-	-	7	142
6"	-	-	5,5	166	-	-	7	167

material	temperatura	
	-	+
Buna-N	50°	110°
EPDM	50°	175°
Silicone	80°	260°
Viton	23°	260°
Teflon	200°	260°

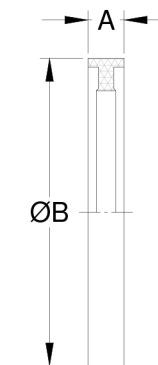
Nota: Material das vedações são de grau alimentício em Buna-N, EPDM, Silicone e Viton dureza 70Shore-A e Teflon com 50Shore-A



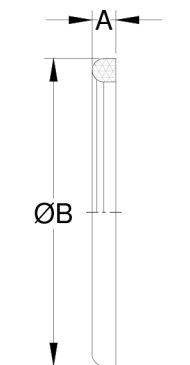
RJT



SMS



IDF



DIN

Observação: Dimensões em milímetros, sujeitas a alteração sem aviso prévio.